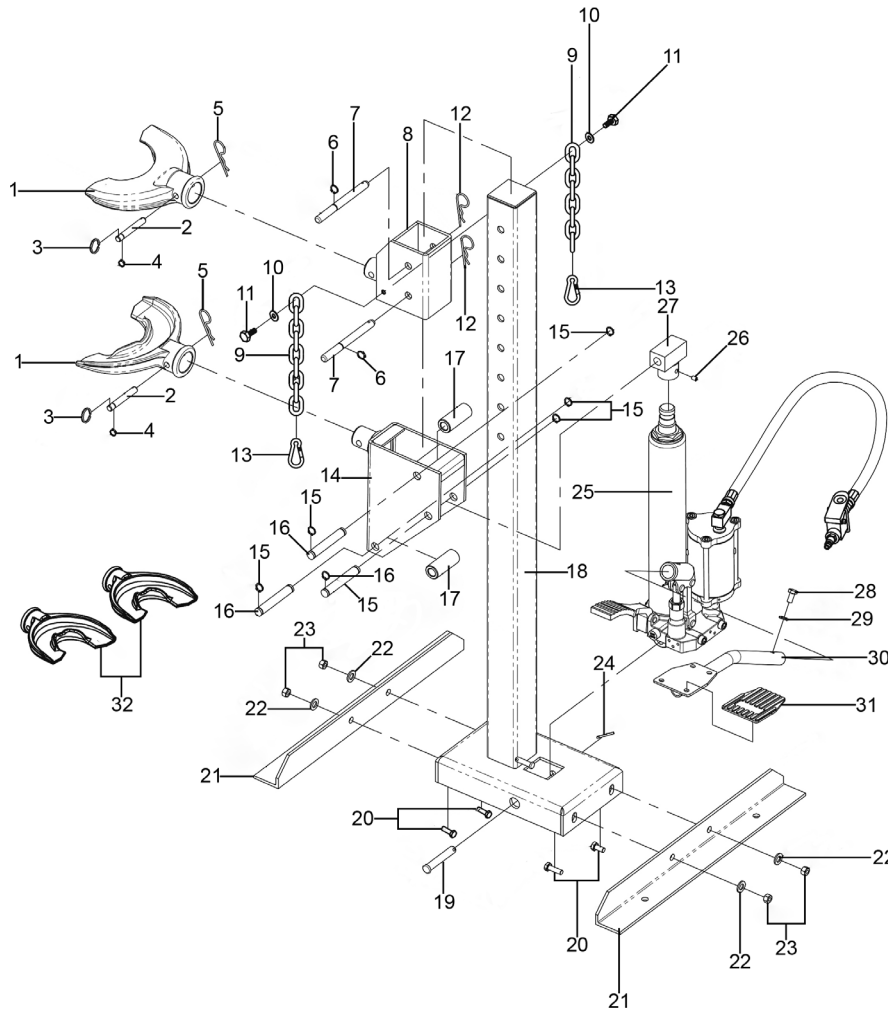


Parts Information: Coil Spring Compressing Station - Air/ Hydraulic 1500kg Capacity Model No: RE232.V3



| Item | Part No. | Description |
|------|-------------|------------------------------|
| 1 | RE231.V3-01 | Curved Coil Bracket, Large |
| 2 | RE231.V3-02 | Pin |
| 3 | RE231.V3-03 | Steel Ring |
| 4 | RE231.V3-04 | Circlip |
| 5 | RE231.V3-05 | R-Clip |
| 6 | RE231.V3-06 | Circlip |
| 7 | RE231.V3-07 | Pin |
| 8 | RE231.V3-08 | Strut Support, Upper |
| 9 | RE231.V3-09 | Chain |
| 10 | FWM6.S | Flat Washer M6 |
| 11 | SS616.S | Hex Head Set Screw M6 x 16mm |
| 12 | RE231.V3-12 | R-Clip |
| 13 | RE231.V3-13 | Shackle |
| 14 | RE231.V3-14 | Strut Support, Lower |
| 15 | RE231.V3-15 | Circlip |
| 16 | RE231.V3-16 | Pin |

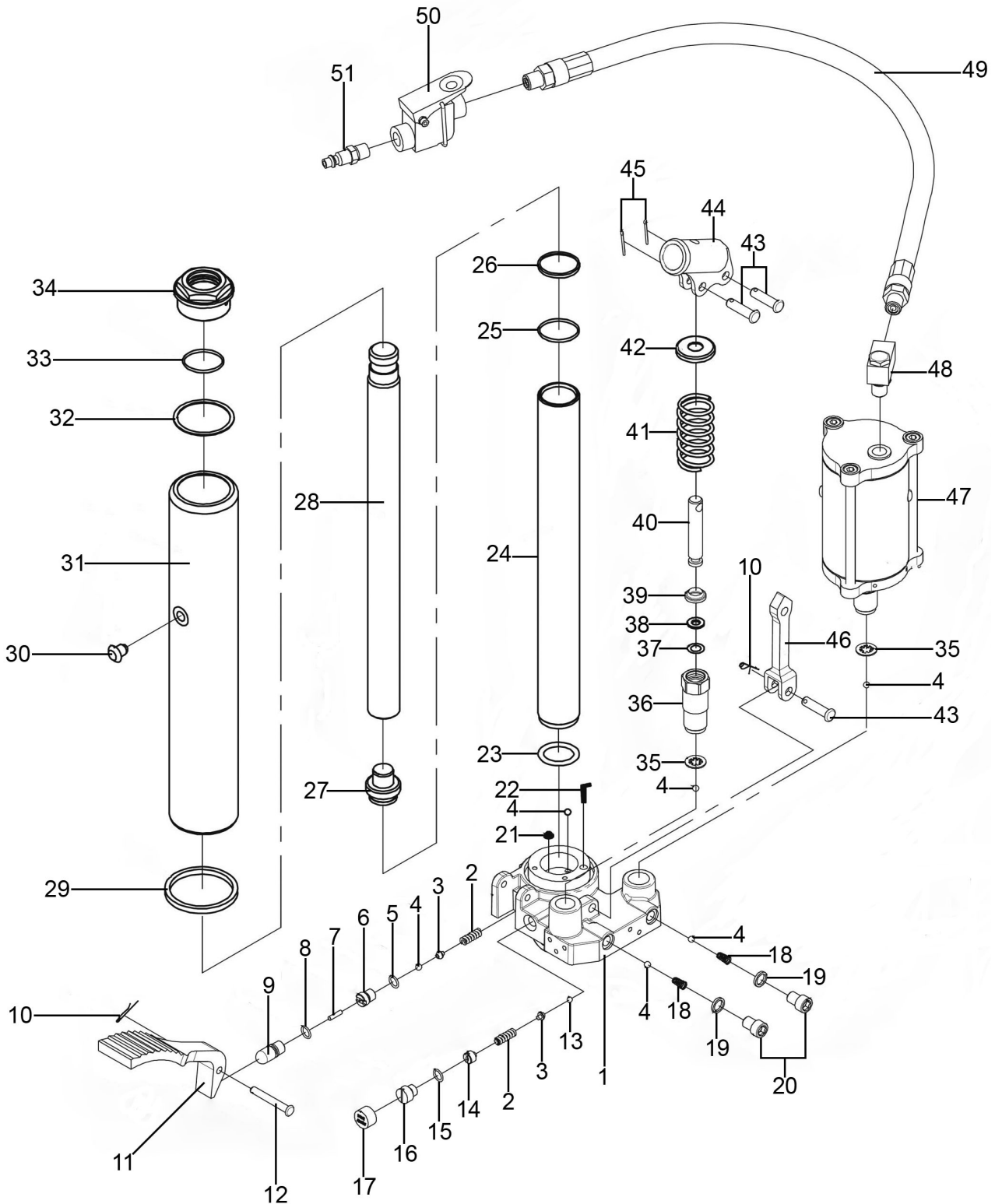
| Item | Part No. | Description |
|------|-------------|------------------------------------|
| 17 | RE231.V3-17 | Bushing |
| 18 | RE231.V3-18 | Upright |
| 19 | RE231.V3-19 | Pin |
| 20 | SS1025.S | Hex Head Set Screw M10 x 25mm |
| 21 | RE231.V3-21 | Bracket |
| 22 | FWM10.S | Flat Washer M10 |
| 23 | SN10.S | Steel Nut M10 |
| 24 | RE231.V3-24 | Cotter Pin |
| 25 | RE232.V3-25 | Ram Assembly (c/w Air Pump & Hose) |
| 26 | GSM810.S | Grub Screw M8 x 10mm |
| 27 | RE231.V3-27 | Saddle |
| 28 | SS812.S | Hex Head Set Screw M8 x 12mm |
| 29 | FWM8.S | Flat Washer M8 |
| 30 | RE231.V3-30 | Lift Foot Pedal |
| 31 | RE231.V3-31 | Rubber Pad |
| 32 | RE231.V3-32 | Curved Coil Bracket, Small |

NOTE: It is our policy to continually improve products and as such we reserve the right to alter data, specifications and component parts without prior notice. There may be alternative versions of this product, please contact us should you require this information.

IMPORTANT: No liability is accepted for incorrect use of product. Spare parts must be fitted by a competent person

WARRANTY: Guarantee is 12 months from purchase date, proof of which will be required for any claim.

Parts Information:
**Coil Spring Compressing Station - Air/
 Hydraulic 1500kg Capacity
 Model No: RE232.V3**



NOTE: It is our policy to continually improve products and as such we reserve the right to alter data, specifications and component parts without prior notice. There may be alternative versions of this product, please contact us should you require this information.

IMPORTANT: No liability is accepted for incorrect use of product. Spare parts must be fitted by a competent person

WARRANTY: Guarantee is 12 months from purchase date, proof of which will be required for any claim.



Parts Information:
**Coil Spring Compressing Station - Air/
Hydraulic 1500kg Capacity
Model No: RE232.V3**

| Item | Part No. | Description |
|------|--------------|--------------------|
| 1 | RE232.V3-P01 | Ram Base |
| 2 | RE232.V3-P02 | Spring |
| 3 | RE232.V3-P03 | Holder, Steel Ball |
| 4 | RE232.V3-P04 | Steel Ball |
| 5 | RE232.V3-P05 | O-Ring |
| 6 | RE232.V3-P06 | Cap, Steel Ball |
| 7 | RE232.V3-P07 | Release Valve Rod |
| 8 | RE232.V3-P08 | O-Ring |
| 9 | RE232.V3-P09 | Release Valve |
| 10 | RE232.V3-P10 | R-Pin |
| 11 | RE232.V3-P11 | Release Foot Pedal |
| 12 | RE232.V3-P12 | Pin, Pedal |
| 13 | RE232.V3-P13 | Steel Ball |
| 14 | RE232.V3-P14 | Spring Base |
| 15 | RE232.V3-P15 | Copper Washer |
| 16 | RE232.V3-P16 | Bolt |
| 17 | RE232.V3-P17 | Plastic Cap |
| 18 | RE232.V3-P18 | Spring |
| 19 | RE232.V3-P19 | O-Ring |
| 20 | RE232.V3-P20 | Hex Socket Bolt |
| 21 | RE232.V3-P21 | Oil Filter |
| 22 | RE232.V3-P22 | Oil Filter |
| 23 | RE232.V3-P23 | Seal Ring |
| 24 | RE232.V3-P24 | Cylinder |
| 25 | RE232.V3-P25 | O-Ring |
| 26 | RE232.V3-P26 | Nylon Ring |

| Item | Part No. | Description |
|------|--------------|------------------------|
| 27 | RE232.V3-P27 | Piston Head |
| 28 | RE232.V3-P28 | Piston Rod |
| 29 | RE232.V3-P29 | Seal Ring |
| 30 | RE232.V3-P30 | Oil Filler Plug |
| 31 | RE232.V3-P31 | Reservoir |
| 32 | RE232.V3-P32 | Nylon Ring |
| 33 | RE232.V3-P33 | O-Ring |
| 34 | RE232.V3-P34 | Top Nut |
| 35 | RE232.V3-P35 | Toothed Washer, Copper |
| 36 | RE232.V3-P36 | Pump Cylinder |
| 37 | RE232.V3-P37 | Plastic Washer |
| 38 | RE232.V3-P38 | O-Ring |
| 39 | RE232.V3-P39 | Seal Ring |
| 40 | RE232.V3-P40 | Piston |
| 41 | RE232.V3-P41 | Spring |
| 42 | RE232.V3-P42 | Spring Cover |
| 43 | RE232.V3-P43 | Link Pin |
| 44 | RE232.V3-P44 | Socket, Foot Pedal |
| 45 | RE232.V3-P45 | Cotter Pin |
| 46 | RE232.V3-P46 | Link |
| 47 | RE232.V3-P47 | Air Motor |
| 48 | RE232.V3-P48 | Connector |
| 49 | RE232.V3-P49 | Air Hose |
| 50 | RE232.V3-P50 | Air Valve |
| 51 | RE232.V3-P51 | Quick Coupler |

NOTE: It is our policy to continually improve products and as such we reserve the right to alter data, specifications and component parts without prior notice. There may be alternative versions of this product, please contact us should you require this information.

IMPORTANT: No liability is accepted for incorrect use of product. Spare parts must be fitted by a competent person

WARRANTY: Guarantee is 12 months from purchase date, proof of which will be required for any claim.

Sealey Group, Kempson Way, Suffolk Business Park, Bury St Edmunds, Suffolk. IP32 7AR



01284 757500



01284 703534



sales@sealey.co.uk



www.sealey.co.uk